

# THE ESSEX



Mountain Modern



Farmhouse



Craftsman

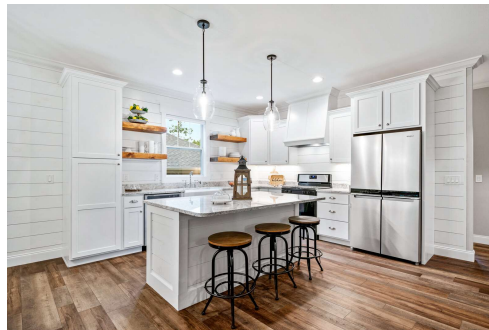
Optional stone shown

Spacious and efficient open floor plan designs plus thoughtful plan options to choose from.

Comprehensive preselected exterior and interior designs make it easy to have peace of mind that your home design is current and timeless.



Optional barn doors shown

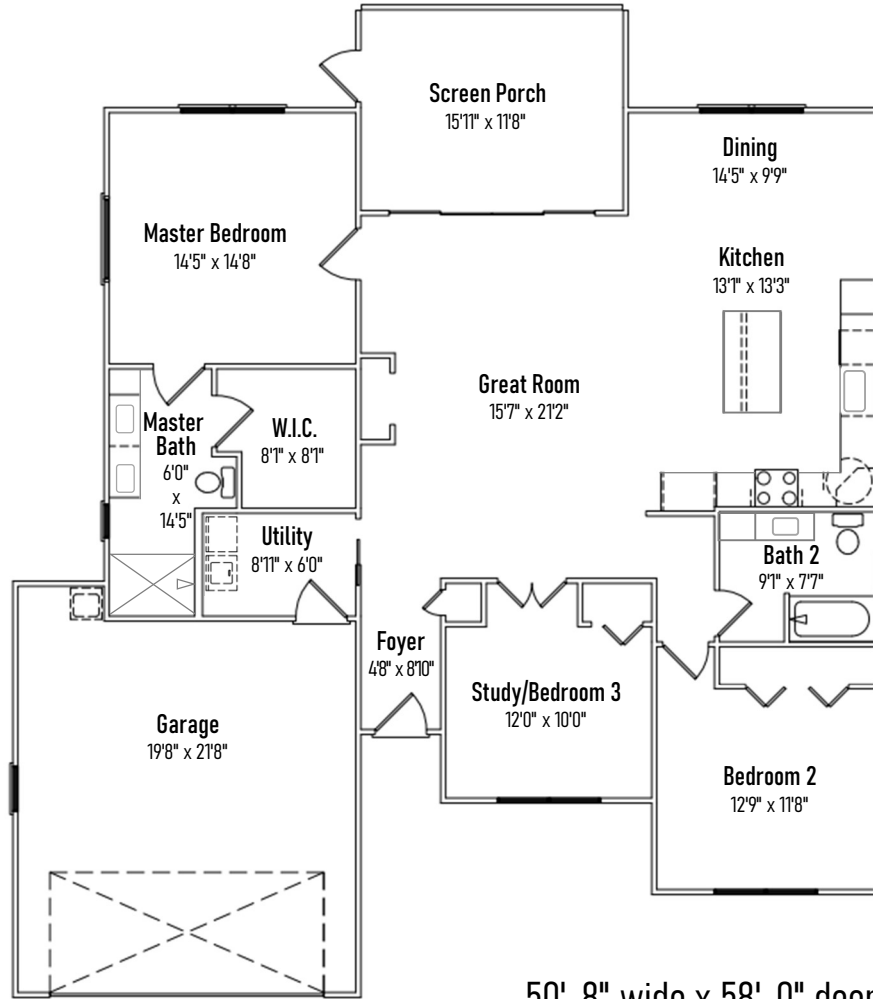


Optional hood shown

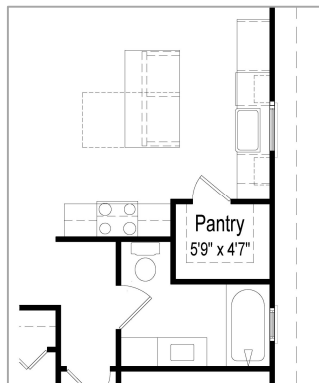


Optional frameless glass shown

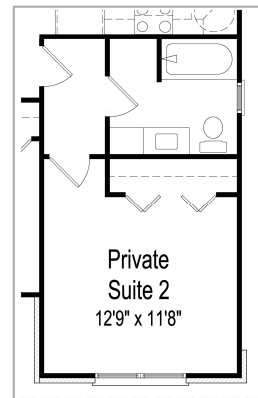




50'-8" wide x 58'-0" deep



Pantry Upgrade Option



Private Suite Upgrade Option

All square footage and dimensions are approximate and may vary in final construction. Some optional upgrades are shown. Please refer to construction drawings and contracts for exact home specifications. Due to Fairfield Homes' continuing efforts in the area of product development, we reserve the right to alter product or design without notice or obligation. All home plans are built under a licensing agreement and are protected by copyright. Reproduction of these home plans, either in whole or in part, including any form and/or preparation of derivative works, thereof, for any reason without prior written permission is strictly prohibited. This material shall not constitute a valid offer in any state where prior registration is required, or if void by law. Base prices do not include premiums or options. Terms, prices, and availability are subject to change without notice or obligation. See a Fairfield Homes sales representative for details.