

Signature Collection

THE CAVANAUGH



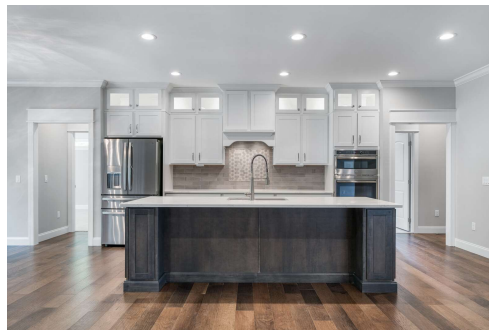
Mountain Modern

Gracious living spaces plus bonus rooms, dedicated dining, or in-home office spaces to suit your lifestyle needs.

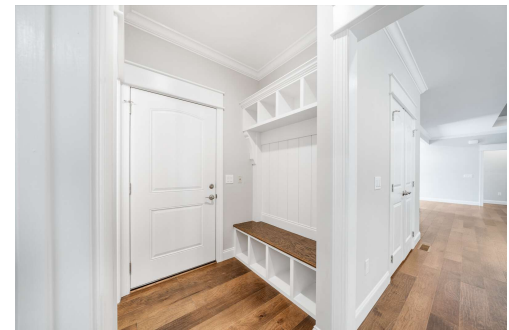
Visit our extensive design center to select from carefully curated products and finishes to complete your home exterior and interior looks



Craftsman

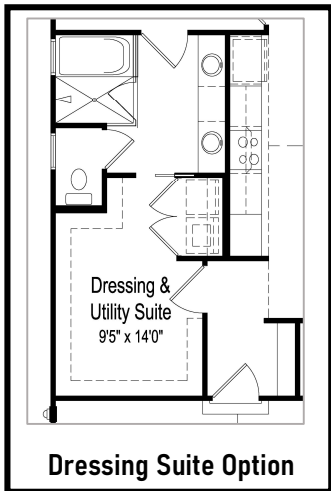
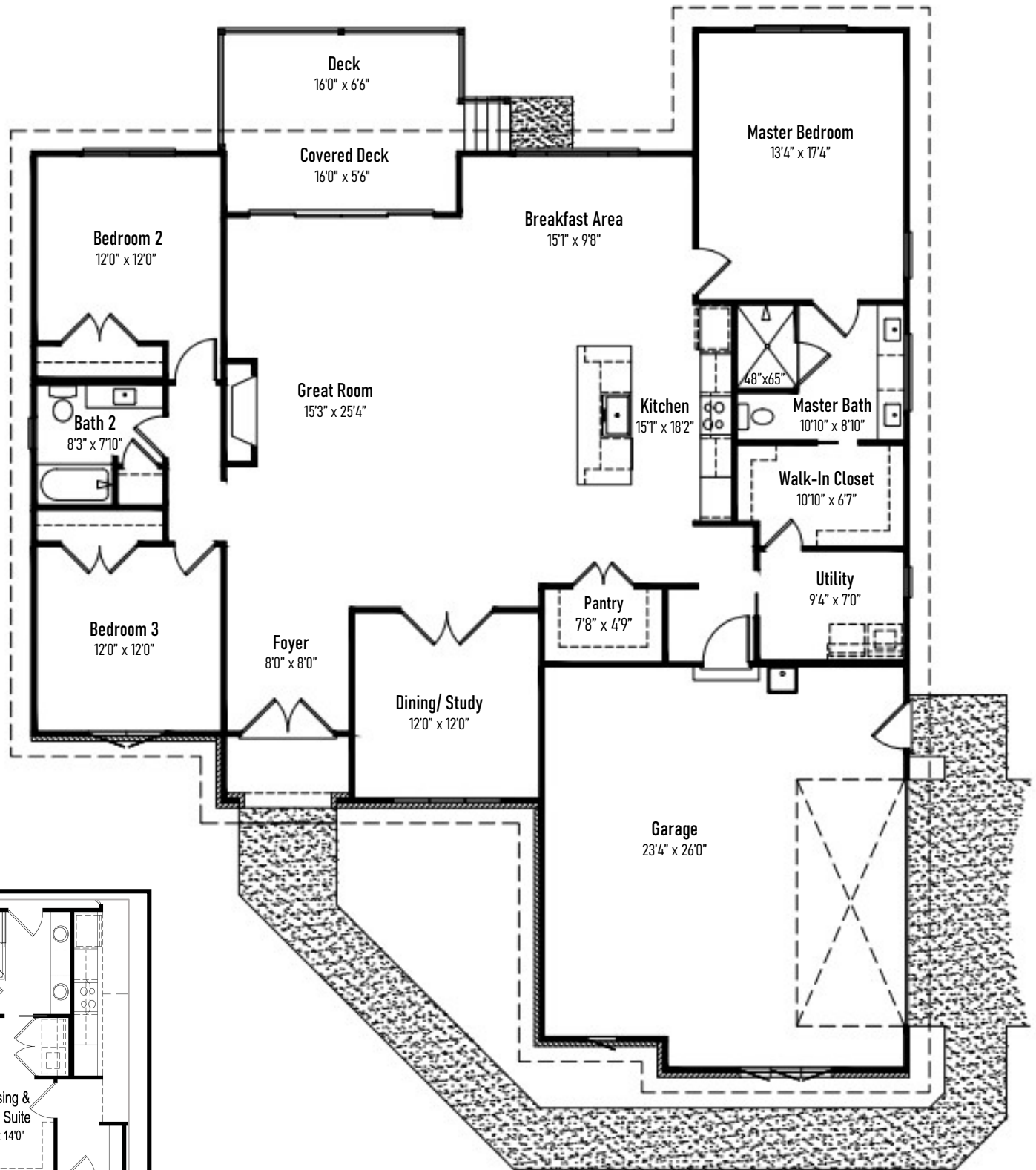


Upgraded Upper Cabinets Shown



Upgraded Bench Shown





57'0" wide x 67'10" deep

All square footage and dimensions are approximate and may vary in final construction. Some optional upgrades are shown. Please refer to construction drawings and contracts for exact home specifications. Due to Fairfield Homes' continuing efforts in the area of product development, we reserve the right to alter product or design without notice or obligation. All home plans are built under a licensing agreement and are protected by copyright. Reproduction of these home plans, either in whole or in part, including any form and/or preparation of derivative works, thereof, for any reason without prior written permission is strictly prohibited. This material shall not constitute a valid offer in any state where prior registration is required, or if void by law. Base prices do not include premiums or options. Terms, prices, and availability are subject to change without notice or obligation. See a Fairfield Homes sales representative for details.