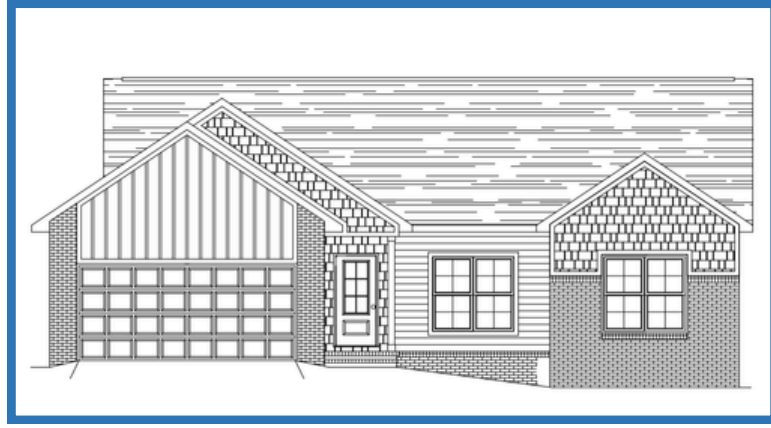


Carriage Collection



The Wakefield
1794 SQ FT 3BD/2BA



The Carlton
1646 SQ FT 3BD/2BA



The Brimley
1612 SQ FT 3BD/2BA



The Logan
1372 SQ FT 3BD/2BA



The Ashford
1474SQ FT 3BD/2BA



The Bungalow
1450 SQ FT 3BD/2.5 BA

Carriage Collection Features

The Wakefield • The Carlton • The Brimley The Logan • The Ashford • The Bungalow

- Energy-saving features, including Tyvek Homewrap and vinyl-insulated windows
- Exterior Brick Color: Multiple colors to choose from
- Easy maintenance vinyl siding, choose from several colors (Board & Batten, Horizontal Lap, and Shakes)
- Windows to be white (Black is available as an upgrade)
- Garage door to be white (Other colors available as an upgrade)
- Roof: 4 colors to choose from
- Interior Paint: choose any Sherwin Williams color (one color for walls, one color for ceilings, and one color for trim/doors) Flat Finish on walls and ceilings, low gloss on trim and doors.
- Flooring to be LVP throughout: Choose from 4 colors
- Airy nine foot high ceilings on the main level
- Tile to only be in the Master shower: choose from 13 styles/colors.
- Aspect Cabinets: choose from 15 different stain colors on Red Oak (upgrades are available)
- Granite Countertops: choose from 3 colors (Upgrades are available)
- Plumbing Fixture Package: Chrome Finish (Upgrade color finishes available)
- Appliance Package: Stainless Steel Whirlpool (Can receive \$1,600 credit and install their own after closing)
- Microwave located over the range.
- Light Fixture Package: \$1,500 with Stokes Lighting
- Vanity Mirrors: The customer will provide them, and FFGH will install them at closing.
- Cabinet Door and Drawer Hardware: Satin Nickel finish (Upgrade color finishes available)
- Rheem 14 Seer Electric Heat Pump Pack Unit (if natural gas is available, it can be a gas unit at no additional charge) Standard 1-year Builder Warranty
- Fireplace to be Electric Modern Flame 36RS-3626 (eliminates the need for a Propane tank). If natural gas is available, the fireplace will be gas at no additional charge.
- The fireplace to have a simple trim surround (no tile)
- The kitchen will have a 4" granite backsplash (no tile)
- Trim: Choose between Craftsman II or Traditional around doors and windows (Baseboards to be 1x6, no crown molding)
- Interior doors: Choose between 2 door styles.
- Crawlspace to be encapsulated with simple supply and return (no dehumidifier)
- Closets and pantry to have wire shelving.
- \$8,000 Landscaping Allowance

*** Please note that customization of The Ashford's footprint is not allowed. This is to expedite construction. Customers will not meet with JT for a Redline Appointment. ***



Due to Fairfield Homes' continuing efforts in the area of product development, we reserve the right to alter product or design without notice or obligation. Base prices do not include premiums or options. This material shall not constitute a valid offer in any state where prior registration is required, or if void by law. Terms, prices, and availability are subject to change without notice or obligation. See a Fairfield Homes sales representative for details.

Copyright 2024 Fairfield Glade Homes. All rights reserved.

www.FairfieldGlade.net | info@fairfieldglade.net | 7012 Peavine Road, Fairfield Glade, TN 38558